

# FARM MACHINERY DISPERSAL AUCTION!

Directions: From Butler, Mo. take Hwy 71 South to Hwy 52 East – Go East ¾ mile to Road 775 Turn right and go 1 ½ miles South to Road 1526- Turn East, it is the 1st place.

## Saturday, May 28, 2011 at 10:30 a.m.



### TRACTORS:

Ford 7600, turbo, 2wd triple outlets, westendorf loader 18.4-34 back tires

Allis Chalmers D 17 series 4, new back tires 16.9-28, 5,275 hrs

### BALER/HAYING EQUIP.

John Deer 346 square baler

9' Vicon disc mower

Side delivery rake

### TRUCKS:

Ford F-250, 1988 4x4 good transmission just rebuilt, single cab

Ford F-150, 1991 2x4, needs battery to run, single cab.

Mowers/ Brush Hog:

JD 110 yard tractor (lawn mower) 1961 running shape

Jacobsen walk behind self propelled, needs repair

8' bush hog

6' finish mower (clean)

Trailers:

15'x6' bumper pull dual axel (needs floor)

16'x7' bumper pull, dbl axel good shape

### MISC EQUIPMENT:

Ford 2 bottom plow

3 bottom plow

Land pride 6' 3pt blade

Older equip (scrap)

Free standing fuel tank

Free standing Sanborn air compressor like new 5hp

Gas pressure washer 6hp, 2300 psi

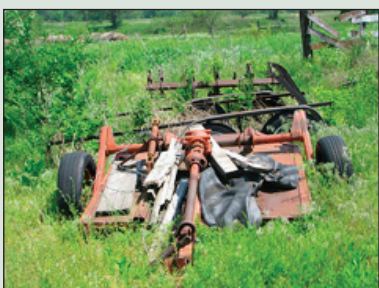
### DRILL:

JD no till 15 row drill

### CATTLE EQUIP:

Feed bunks; Calf puller

Misc supplies



Auctioneers Note: Jim and Ella Mae Isaac have retired and our selling all remaining farm equipment, this will be a short sale so please be on time.

## Seller: Jim & Ella Mae Isaac



Auction & Real Estate

Jerry Hertzog 816-590-6187 Jim Hertzog 816-289-3011, Ron Flaigle

Todd Hertzog 816.813.1767 todd@hertzogauction.com

Darren Murray at darren@hertzogauction.com

www.hertzogauction.com